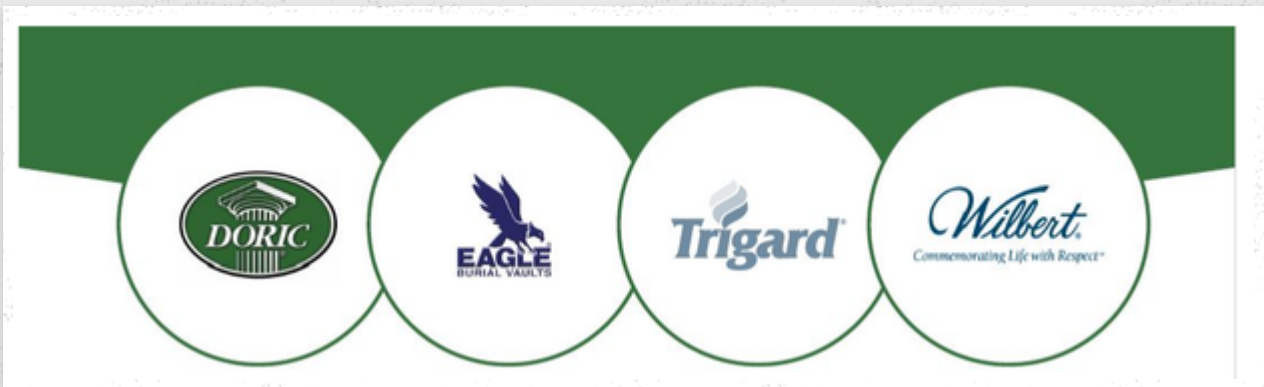


NCBVA NEWSLETTER

OSHA | ANNUAL MEETING | PLANT TOUR | NEW BOARD MEMBERS



IN THIS ISSUE

OSHA's Crane & Derrick Ruling | Annual Meeting | Plant Tour | Board of Directors Nominees Sponsors | Certification Program | Dealer Incentives & Member Benefits | Legal Calls | Hotel Information

CONTRADICTION IN OSHA'S CRANES AND DERRICKS CONSTRUCTION STANDARD

OSHA'S CRANE RULING

The NCBVA was instrumental in reaching [a ruling in our favor 10+ years ago](#) to OSHA's Cranes and Derricks in Construction standard. This ruling stated that the movement and placement of burial vaults is **not** a construction activity and that the specialized equipment used to move/place burial vaults (in a grave) at the cemetery is **excluded** by the Cranes and Derricks in Construction standard.



WHY IS THIS IMPORTANT?

This ruling equated to a savings of thousands of dollars per burial vault company - EACH YEAR – by avoiding specialized training per vault man. Even a plant with only one vault man would have saved \$22,000 to date.

HOWEVER...

In [a recent OSHA release](#), there is a contradiction to the directive in the online version (only) of "OSHA's Cranes and Derricks Construction standard." On page 13, **the online version now appears to define the movement/placement of vaults as a construction activity (instead of not a construction activity).** [VIEW FULL LETTER](#)

JOIN US FOR THE ANNUAL MEETING 8/11

We are less than a month away from the NCBVA annual meeting in Kansas City, MO August 10-11! [Join us](#) and experience the benefits of connections and friendships within the industry regardless of product or brand affiliations. As NCBVA President Jeff Hardy said, "We are truly a UNIFIED VOICE for the industry."

- Meeting attendee: \$400 (member) and \$625 (non-member)
- Guest: \$100
- Child (14 and under): \$50
- Sponsorship: +\$300

PLANT TOUR & SUPPLIER WORKSHOPS

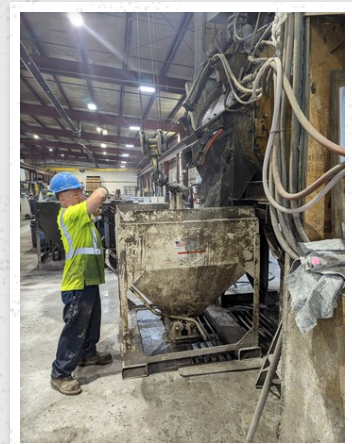
On the agenda Friday is an offsite visit to Wilbert Funeral Services, Grandview, MO for lunch and a plant tour. We will get a sneak peek at their operations and enjoy some educational demonstrations from some of our suppliers.

The tour will include:

- Pole Base casting
- Redi-Rock production
- Septic tanks
- Feed bunks
- Vault personalization
- Crematory

Supplier demonstrations include:

- Graveside equipment panel with [Holland Supply](#) & [Cemetery Funeral Supply](#)
- The Pros of batching your own concrete with [Mixer Systems](#)
- Benefits of volumetric concrete for your operations with [Cemen Tech](#)



MEETING SPEAKERS: POUL LEMASTERS (LEGAL & OSHA) & PATRICK LEWANDOWSKI (CONCRETE SPECIALIST)



AGENDA (TENTATIVE)

August 10 - 11, 2023 | Annual Meeting called by Jeffrey Hardy
Crossroads Hotel, Kansas City, MO – Crossroads Ballroom

THURSDAY

| | | |
|-------------|---|----------------|
| 5:30-6:30pm | Cocktails and Networking <i>Dinner on your own</i> | Percheron East |
|-------------|---|----------------|

FRIDAY

| | | |
|-------------|--|----------------------------------|
| 7:00-8:00am | Continental Breakfast – Hotel Restaurant | Lazia |
| 8:30 | Welcome and Introductions | Jeffrey Hardy |
| 8:05-8:30 | Business Meeting and Elections | Committee Chairs |
| 8:30-9:00 | Fundamentals of a Concrete Specialist | Patrick Lewandowski |
| 9:00-10:00 | Legal and OSHA Crane Update | Poul Lemasters |
| 10:00 | Break | |
| 10:20 | Depart for Wilbert Funeral Services – hotel lobby | |
| 10:45 | Wilbert Funeral Services Plant Tour, Grandview, MO | Royden Wood |
| 11:15 | Volumetric Concrete for Your Operations | Jared Evers <i>Cemen Tech</i> |

12:00pm Sandwiches

| | | |
|-------|---|---|
| 12:45 | Batching Your Own Concrete <ul style="list-style-type: none"> types of mixers benefits to batching your own concrete and ROI | Stephen Nelson <i>Mixer Systems</i> |
| 2:00 | Tent Safety, Liability & Maintenance Panel with Show & Tell <ul style="list-style-type: none"> proper care and maintenance top items to be inspected daily/monthly/quarterly installation procedures why it is impossible to have a wind rating | Stan Scruggs, Jr. <i>Cemetery Funeral Supply</i> Jordan Weaver <i>Holland Supply</i> |
| 3:00 | Closing | Jeffrey Hardy |
| 3:30 | Depart for Hotel Meet in hotel lobby for shuttle departure to baseball game. If you are not riding the shuttle with the shuttle group, please let Lisa Anderson know | |
| 7:10 | KC Royals vs. Cardinals (optional) | |

QUICK LINK: REGISTER FOR ANNUAL MEETING

BOARD OF DIRECTORS NOMINEES

We have three nominees slated to join the Board of Directors and will hold a vote at the annual meeting.



Todd Dean, Richards Wilbert:

Todd Dean of Richards Wilbert (Hagerstown, MD) is an active multi-site member of NCBVA with three manufacturing plants and one distribution warehouse. With locations in Maryland and Virginia, Richards Wilbert onboarded Todd as its director of marketing and sales over 20 years ago. Todd is a licensed funeral director, and his organization manufactures and services vaults. In addition, they have a grave digging operation in Salem, actively sell caskets and urns, and recently sold a pet crematory business. Their sister company, Montgomery Vault, proudly serves Arlington National Cemetery.

Paul Evans, Evans Burial Vaults, Inc.:

Paul Evans is the current owner of Evans Burial Vaults, Inc., a diversified pre-cast concrete/funeral services business with manufacturing facilities located in Lancaster, Lebanon, Harrisburg, and Gettysburg, PA. He has more than 10 years of experience as an environmental/engineering consultant and serves as an expert investigator for the Department of Labor (OSHA). Paul holds a B.S. in geology/environmental studies from Dickinson College and an M.S. in environmental pollution control (engineering) from Penn State University. Among his many leadership positions, Paul has served on the Board of Directors for Eagle Burial Vault Association and PA Concrete Burial Vault Association.



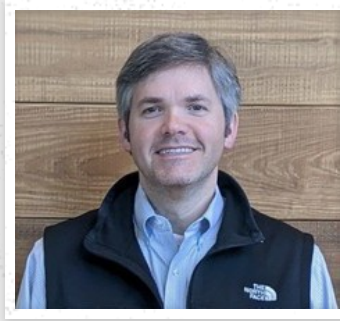
Craig Harms, Lenox Cement Products:

Craig Harms grew up in the business. Lenox Cement Products started in 1910, and his grandfather purchased it in 1955. They primarily manufactured concrete septic tanks, and expanded to burial vaults in the early 80s. Lenox Cement Products began as an Eagle dealer for a few years and then switched to Trigard. As a child, Craig looked forward to Saturdays with his father and grandfather helping with graveside services at all the local cemeteries. By 16, he was working after school, weekends and summers with the business. After Craig graduated from Oakland University, he began working full time with a focus on sales and marketing for burial vaults. In 2016, in partnership with his father, they opened a stand alone crematorium.

THANK YOU TO OUR OUTGOING BOARD MEMBERS



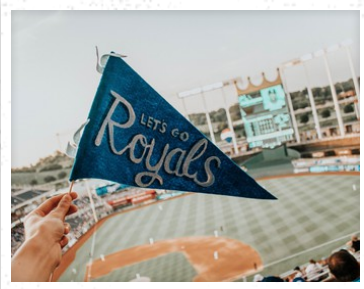
Steve Handley



Brett Henery



Dan Welzenbach



ROYALS VS. CARDINALS GAME

Join us for an optional group outing to the Kansas City Royals baseball game on Friday, August 11 at 7:00pm. If you did not purchase your ticket during registration, [email us](#) to join in on the fun! Tickets are now on a space available basis.

Transportation information will be sent to all baseball game attendees prior to the meeting.

SEE WHO'S COMING

[See who's coming](#) to the annual meeting!

| Last Name | First Name | Company Name |
|--------------|------------|--|
| Domingo | Steve | Accurate Wire & Strip Forming, Inc |
| Durante | Jeff | Accurate Wire & Strip Forming, Inc |
| Payment | Joey | Atlas Concrete Products |
| Payment | Adair | Atlas Concrete Products |
| Babylon | Donna | Babylon Vault Company |
| Flater | Samantha | Babylon Vault Company |
| Forney | Sean | Babylon Vault Company |
| Koontz | Steven | Babylon Vault Company |
| Baker | David | Baker Landscaping and Excavation Inc |
| Bickes | Cory | Bickes, Inc. |
| Evers | Jared | Cemen Tech |
| Scruggs | Stan | Cemetery Funeral Supply |
| Cooper | Richard | Central Burial Vaults |
| Cooper | Polly | Central Burial Vaults |
| Hedgepeth | Clinton | Clinton Excavation LLC |
| Wiens | Jim | CVI Funeral Supply |
| Wiens | Sharon | CVI Funeral Supply |
| Evans | Paul | Evans Burial Vaults |
| Evans | Melissa | Evans Burial Vaults |
| Handley | Steve | Handley Precast Systems, Inc. |
| Handley | Kelly | Handley Precast Systems, Inc. |
| Hardy | Gerald | Hardy Doric Inc |
| Hardy | Jeffrey | Hardy Doric Inc. |
| Atwood | Brandon | HD Williams |
| Weaver | Jordan | Holland Supply |
| Lemasters | Poul | Lemasters Consulting |
| Foley | Brian | Means Precast Co. Inc. |
| Ricciardi | Brian | Means Precast Co. Inc. |
| Nelson | Stephen | Mixer Systems |
| Lewandowski | Patrick | NCBVA |
| Anderson | Lisa | NCBVA Peacock Marketing |
| Harms | Craig | Plastic Plaque Products |
| Harms | Vanessa | Plastic Plaque Products |
| Jefferson | James | Southside Grave and Vault Inc |
| Leach | Ethan | Superior Vault Company |
| Mathews | Whitney | Superior Vault Company |
| Signor | Ann | The Fort Miller Service Corp. |
| Darby | Ethan | Trigard |
| Miller | Jeff | Trigard Vault |
| Delle Chiaie | Bruce | Whitman Burial Vault |
| Sannipoli | Freddie | Wilbert |
| Fachorn | Jason | Wilbert Funeral Services |
| Welzenbach | Andrew | Wilbert Funeral Services |
| Wood | Royden | Wilbert Funeral Services, Inc. |
| Anderson | Boyd | Wilbert Greenville |
| Anderson | Colt | Wilbert Greenville |
| Pierson | Catherine | Wilbert Vault Company of Paducah, Inc. |
| Sanders | Dennis | Wilbert Vault Company of Paducah, Inc. |
| Sanders | Lisa | Wilbert Vault Company of Paducah, Inc. |
| Henery | Brett | Wilbert Vaults of Houston |
| Walker | James | Wilbert Vaults of Houston |
| Wysocki | Mark | Wilbert Vaults of Houston |

THANK YOU TO OUR SPONSORS

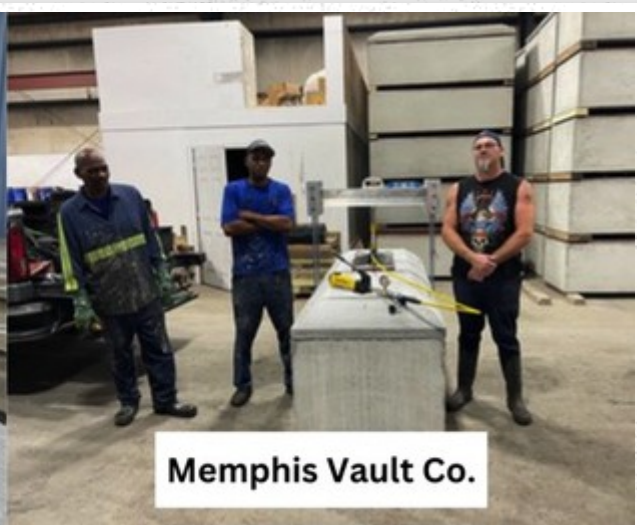
- [Doric](#) • [Eagle](#) • [Trigard](#) • [Wilbert](#)
- [Cemen Tech](#) • [Cemetery Funeral Supply](#) • [HD Williams](#) • [Holland Supply, Inc.](#)
- [Mixer Systems](#) • [Plastic Plaque Products](#)



RECENT CERTIFICATIONS



Doric of Tennessee



Memphis Vault Co.

MEET OUR CONCRETE SPECIALISTS



Patrick Lewandowski: Patrick has 31 years of industry experience and education in civil engineering construction materials working directly in the cement, ready-mix, governmental specification, mining, tunneling, precast, and macro-synthetic fiber industries.

Mike Barry: Mike has worked in the concrete industry since 1978, in QC and operations. He is certified as concrete field technician, flatwork finisher, pervious concrete installation technician, compressive strength testing, windsor probe testing, and nuclear density testing.



IS YOUR PLANT NCBVA CERTIFIED OR HAS YOUR CERTIFICATION EXPIRED?

NCBVA certification is renewable every 5 years. The schedule for certification is based on certification date and geographic location. View the full [member directory](#) along with each plant's certification status.

- All certifications will be conducted by a concrete specialist.
- Areas observed during a certification visit include maintenance and cleanliness, production, employee safety, and concrete load testing (performed by a third-party testing facility).
- In order to be added to the certification schedule, your plant must be an active member of the NCBVA (up-to-date with dues).
- **Plant certifications are \$1500 per site.** For Doric plants, fees are direct billed to Doric. As always, each plant is responsible for their cylinder testing fee of \$125.

[Let us know](#) if you are interested in becoming an NCBVA Certified Plant or renewing your certification.

DEALER INCENTIVES TO JOIN NCBVA



**JOIN/RENEW NCBVA MEMBERSHIP
AND RECEIVE A \$225 DISCOUNT.**

Doric will pay \$225 towards
NCBVA membership dues.

Email rtrout@doric-vaults.com



**JOIN/RENEW NCBVA MEMBERSHIP
AND RECEIVE A \$225 CREDIT.**

Trigard will credit any dealer \$225 towards
their NCBVA membership dues.

Email custserv@trigard.com



**JOIN/RENEW NCBVA MEMBERSHIP
AND RECEIVE 50% OFF WFSI REGISTRATION* FEES.**

*WFSI will apply a 50% discount towards attendance at
2023 QC School, WFSI meeting, or sales meeting.

Email rwood@wilbert.com

DOWNLOAD/PRINT NCBVA MEMBERSHIP FORM

MEMBERSHIP BENEFITS

Every major brand affiliation of concrete vault manufacturer is represented as a member of the organization. As an association, the NCBVA represents groups that provide 90% of all outer burial receptacles interred within the boundaries of its membership.

[Click here](#) to view our membership directory.

WHY YOU SHOULD JOIN:

- 3 articles/year on a trending legal topic
- 3 Q&A conference calls with NCBVA legal counsel
- Ready-to-use legal templates such as:
 - disinterment legal form
 - social media policy sample
 - employee handbook including a write-up of the 10 key elements
 - job application form
- Access to NCBVA plant certification program with a concrete specialist
- Quarterly email updates on industry news and education
- Unified voice of the industry to address industry regulations

Single-Site Membership - \$450

Vendor/Supplier - \$450

Multi-Site (manufacturing) Membership - \$1,000

JOIN NCBVA - THE UNIFIED VOICE

MEMBER LOGO

Add the **new NCBVA Member 2023 logo** to your website. [Send us an email](#) and we will respond with the logo, ready to insert to your marketing materials.

View all [members](#).



DID YOU MISS THE LAST LEGAL CALL ON NON-COMPETE AGREEMENTS?

NCBVA members have access to the recordings of all of the legal calls. Listen to "Non-Compete vs Non-Solicitation" through the [members only page](#). [Email us](#) if you need access.

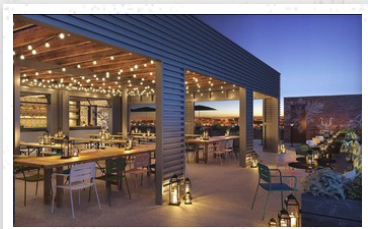
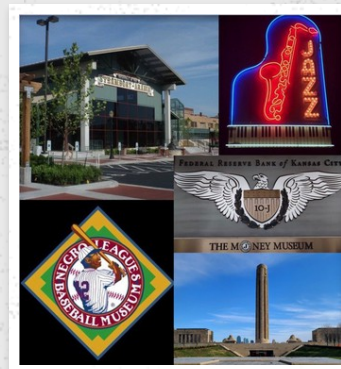
[Register](#) for the next legal call on Wednesday, November 1, at 2:00pm ET. The topic is "Breaks and Vacations in the Workplace."

THINGS TO DO IN KANSAS CITY

Kansas City has a lot to offer! From the riverwalk, markets, museums, and arts district, to breweries, BBQ, and jazz, you will be amazed at all the things to do! Click on [this link](#) for some unique activities in Kansas City!

If you're a big fan of museums, you will not be disappointed! There are several interesting museums to visit as well:

- [The National WW1 Museum and Memorial](#)
- [The Negro Leagues Baseball Museum](#)
- [The American Jazz Museum](#)
- [The Arabia Steamboat Museum](#)
- [The Federal Reserve Bank of Kansas Money Museum](#)



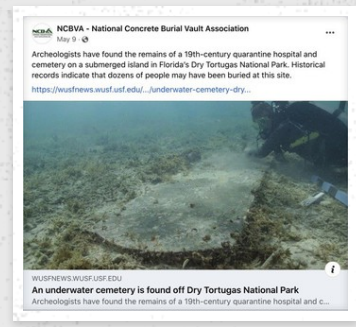
HOTEL INFORMATION

[The Crossroads Hotel](#)

2101 Central Street
Kansas City, MO 64108
(P) 866-531-2400

[Email us to reserve your hotel room](#) and to check availability in our room block.

LIKE US ON FACEBOOK



PRINT THE NEWSLETTER

[Download/Print](#) a copy of this newsletter and share it with others who may be interested.

FORWARD TO A FRIEND

Feel free to **forward this newsletter to a colleague**. They can join NCBVA or sign up for upcoming communication on the [NCBVA website](#).




NATIONAL CONCRETE BURIAL VAULT ASSOCIATION

 Facebook

 PO BOX 8314 | GREENVILLE S...

 info@ncbva.org

 888-886-2282

 ncbva.org

To ensure delivery, add users.smores.com@mailgun.smores.com to your address book.

MEMBER BYLAWS

